

# Forensic Magicube V3

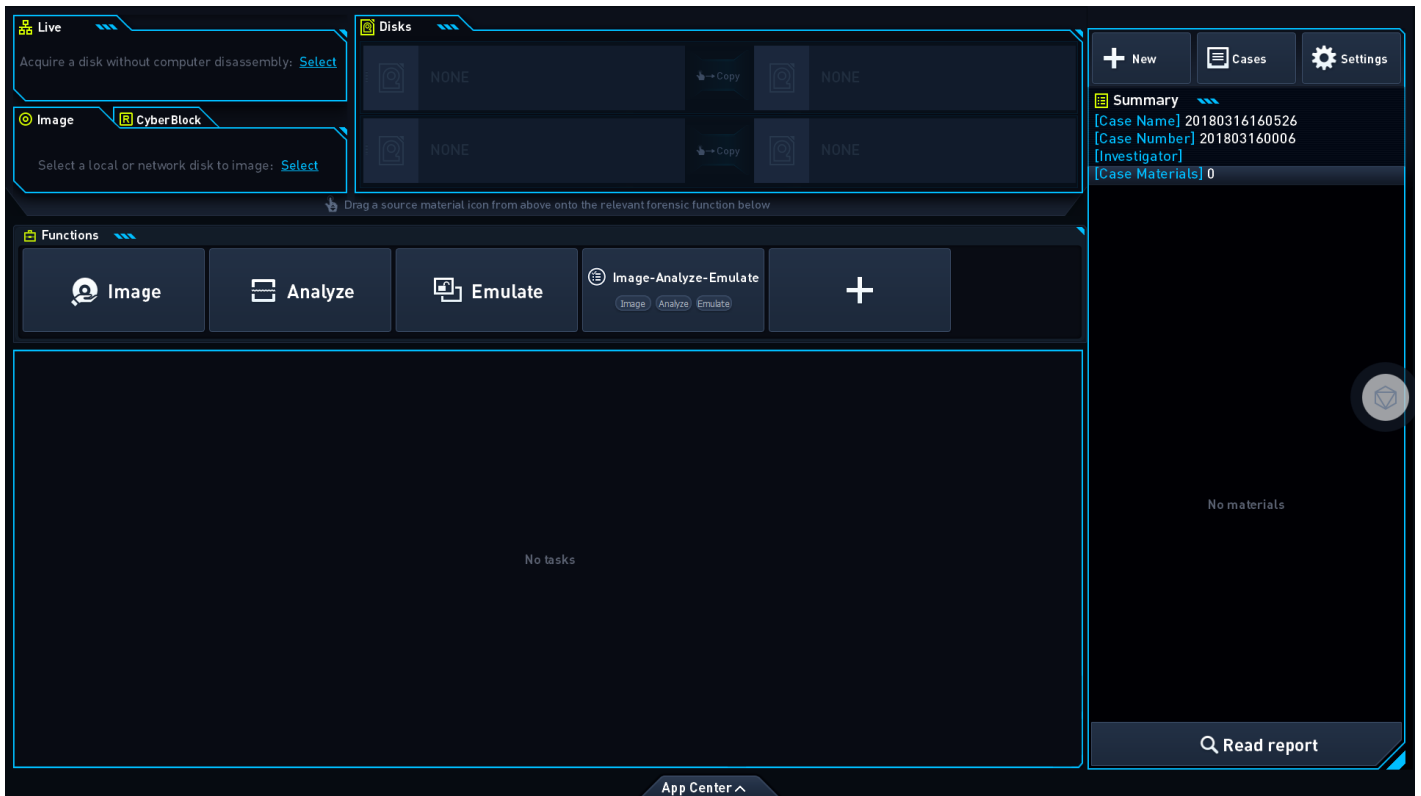
All-in-One Solution for Crime Scene Investigations. A portable and versatile computer forensics equipment. Highly-integrated hard disk duplication, data analysis and system emulation functions in a magic box.



## Features

- Built-in write-blocker and duplicator
- Standard forensic workflow
- Automatical duplication, analysis and OS emulation
- 11.6" touch-screen display, drag & drop operation
- Widely support various storage devices
- Portable size for crime scene investigation
- Support two channel parallel imaging

Hard Drive Duplication	Forensic Analysis	OS Emulation
<ul style="list-style-type: none"> <li>○ 1-to-1, 1-to-2, 2-to-2 disk duplication</li> <li>○ Support IDE, SATA, SAS, SCSI, USB</li> <li>○ Duplication speed up to 39GB/min</li> <li>○ Keyword searching during duplication</li> <li>○ Acquisition in HPA/DCO protected area</li> <li>○ Support MD5 and SHA-1 hashing during duplication</li> <li>○ Recovery image to hard disk</li> <li>○ Remote duplication through network</li> </ul>	<ul style="list-style-type: none"> <li>○ Quick and automated forensic analysis</li> <li>○ Evidence preview</li> <li>○ Data recovery (FAT32,NTFS, ReFS, HFS+ etc.)</li> <li>○ Fast indexing and keyword searching</li> <li>○ Encrypted volume/file decryption, eg. BitLocker, TrueCrypt, FileVault 2</li> <li>○ Instant messenger, browser history, user access and email analysis</li> <li>○ Quickly recover deleted mails on Foxmail and Outlook Express</li> </ul>	<ul style="list-style-type: none"> <li>○ OS emulation allows a direct view on the suspect computer</li> <li>○ Dynamic emulation helps malware / website / database analysis</li> <li>○ Acquire saved passwords (dial-up, MSN messenger, browser, PSSP) on emulated computer</li> <li>○ Bypass login password to emulate Windows and Mac OS</li> <li>○ Emulate mounted raw, 001, or E01 image files, and physical disk with write-blocker</li> <li>○ Support popular Windows, Mac, Linux operation system</li> </ul>



## Specifications:

Item	Specification	
<b>Product Name</b>	Forensic Magicube	
<b>Model</b>	MagiQ-2	
<b>Interfaces</b>	SATA/SAS*2(read-only) IDE read-only *1 USB3.0 *1(read-only)	SATA/SAS*2(read&write) USB3.0*4(read&write) USB3.1 Type-C*1(GEN2) HDMI*1
<b>OS</b>	Win7 SP1 64 bits OS	
<b>CPU</b>	Intel Skylake i7-6820EQ with 2.8G main frequency	
<b>Memory</b>	DDR4 2133MHz 32G	
<b>Hard Drive</b>	480GB SSD	
<b>Screen</b>	11.6-inch, FHD(1920x1080) touchscreen	
<b>Dimension</b>	336*326*77 mm (L*W*D)	
<b>Accessories</b>	MagiCube Host *1 Power adapter *1 Power cable *1 USB 2.0 Gigabit Ethernet card *1 Express Gigabit Ethernet card *1 Wireless mouse & keyboard kit *1 3-in-1 converter *1 IDE data cable *2 SATA cable/20 cm *1	SATA cable/45 cm *1 SAS data cable/short *4 SAS data cable/long *1 U disk for remote boot *1 U disk for system recovery *1 SATA to micro-SATA converter *1 User manual *1 MagiCube Bag *1 FTP-6 (Foil Twisted Pair) network cable *1
<i>Specifications are subject to change without notice.</i>		